

FibroCell

Cellular Confinement System





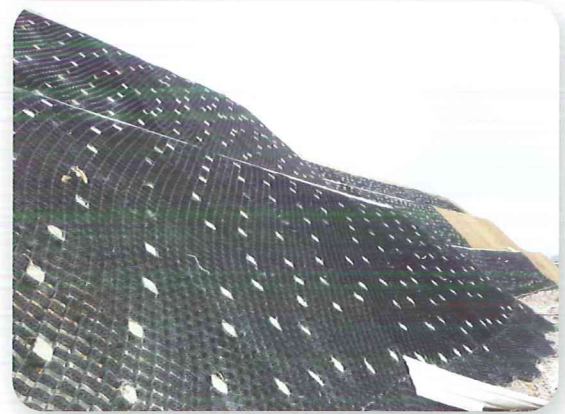
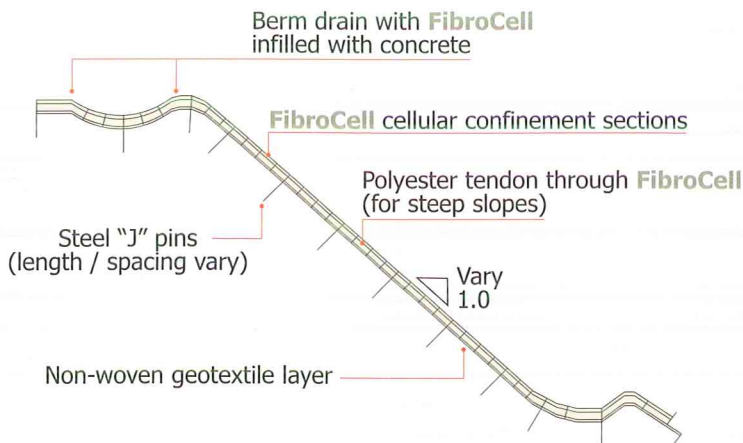
• Slope Protection

FibroCell provides excellent protection for slopes against erosion through its engineered, expandable, strong, high density polyethylene, honeycomb structure. It confines desired infill and resist from downward migration of material due to hydraulic flows.

FibroCell allows the choice of infill material based upon the demand of specific projects.

- Top soil for well establish vegetation
- Granular infill for steeper non vegetative slopes
- Concrete for hard, durable protection for severe condition

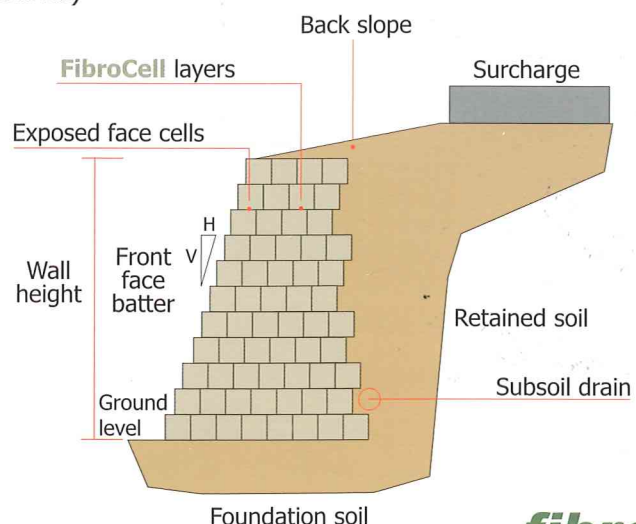
Large cell **FibroCell** is widely used for slopes with moderate inclines and low hydraulic action. The system encapsulates and protects the vegetative root zone. Large cell **FibroCell** can be installed fast with wooden or metal J-pins commonly used as anchors.



• Earth Protection

FibroCell earth retention system is extremely durable and resistant to chemicals and water. It offers more flexible cost competitive retaining system than conventional earth retention systems.

- **FibroCell** earth retention system provides very steep near vertical surface which allows vegetation.
- When stacked with required set back **FibroCell** allows to build a stable gravity retaining wall or can be used as facing for reinforced soil walls.
- Variety of infill materials which can be used with **FibroCell** earth retention system includes;
 - Top soil with various selected vegetation
 - Granular material (sand/gravel/stone)
 - Concrete

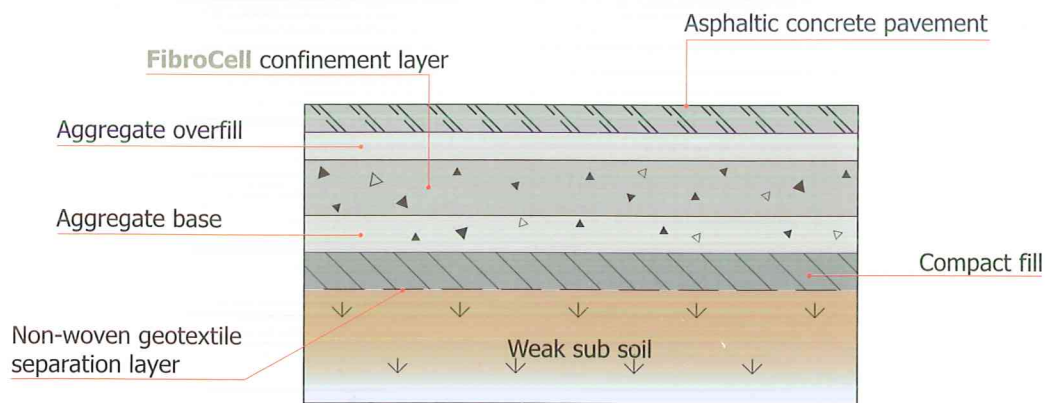




Load Support

FibroCell stabilizes base material and minimize surface rutting in poor subgrade conditions. The load support system provides semi rigid surface for roads and yards by reducing fill thickness considerably.

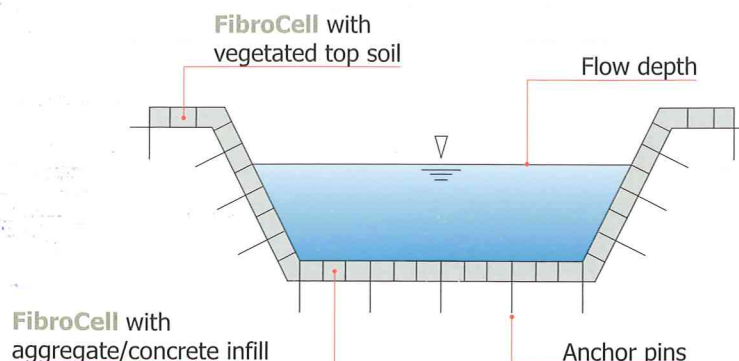
- **FibroCell** allows the use of on-site poor quality granular fills inplace of costly imported material
- Produce stiff base with high flexural strength
- Prevents lateral displacement of infill
- Reduce vertical deflections
- **FibroCell** reduces the thickness and weight of structural layers
- The cellular confinement system increases the number of cyclic load applications many times than that of conventional unconfined condition

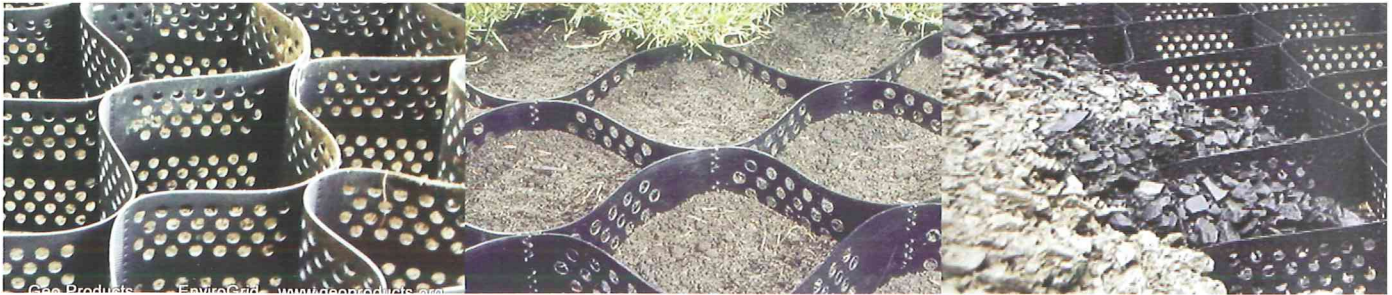


Channel Protection

FibroCell effectively improves the hydraulic performance of conventional protection material such as concrete, gravel, vegetation and rip-rap by confinement within the cellular structure. Channel embankments can be protected from severe erosive conditions and continuous flow conditions using **FibroCell** channel protection system.

- Suitable for low to moderate and intermittent flow conditions with top soil as infill
- With correct infill material size this is suitable for low to moderate flow channels
- Suitable for channels that are exposed to severe hydraulic and mechanical stresses
- Cellular confinement system eliminates complicated structural components required for conventional protection systems
- **FibroCell** provides a flexible lining which is easy to install saving time and cost

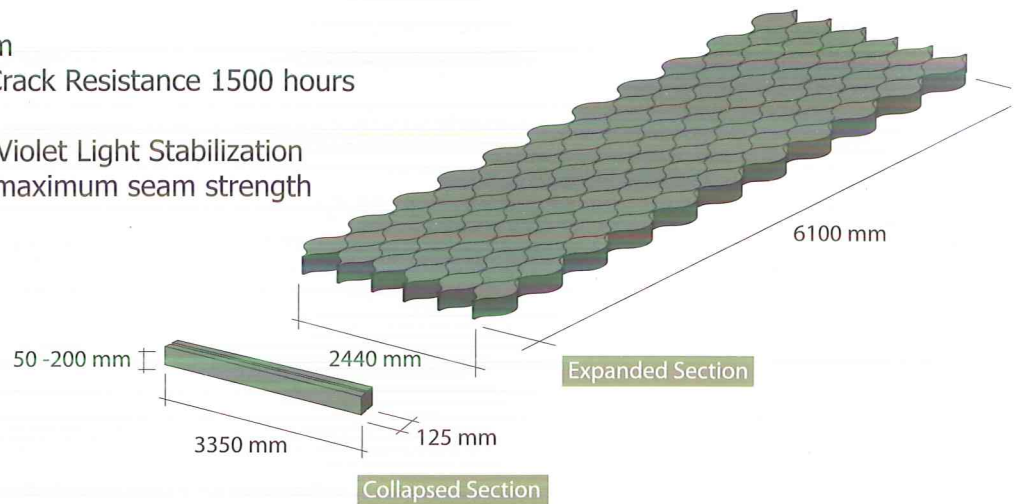




Specifications

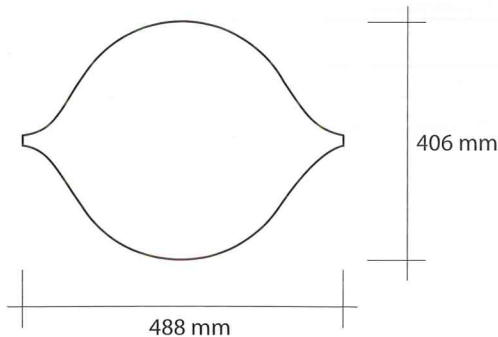
FibroCell sections are manufactured from High Density Polyethylene (HDPE) strips of the following standards.

- Density 0.94 g/cm
- Sheet thickness 1.2 mm
- Environmental Stress Crack Resistance 1500 hours
- Contain Carbon Black
1.5% - 2.0% for Ultra Violet Light Stabilization
- Ultrasonic welding for maximum seam strength



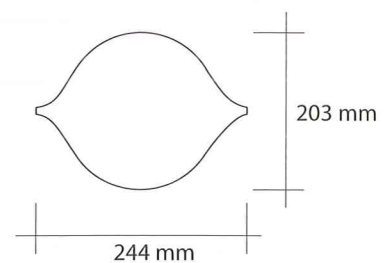
FibroCell

Large Cell
Section size
2.44 m x 12.19 m



FibroCell

Regular Cell
Section size
2.44 m x 6.1 m



The information contained herein is to the best of our knowledge accuracy, but since the circumstances and conditions in which it may be used are beyond our control, we do not accept any liability for any loss or damage, however arising, which results directly or indirectly from use of such information nor do we offer any warranty or immunity against patent infringement.

MTS FIBROMAT (M) SDN BHD (491502-K)

Wisma Fibromat, No. 574 A, B, C, Jalan Samudra Utara 1, Taman Samudra, 68100 Batu Caves, Selangor D.E., Malaysia

Tel: +603-6189 9999, +603-6188 4300 Fax: +603-6189 7559, +603-6187 9775

enquiry@fibromat.com.my www.fibromat.com.my